

Experience top-notch safety at its finest

MORPHY LIFE LITE-2



Fingerprint



Password



RFID Card



OzoLife App



Emergency Key



KEY FEATURES



Door-bell
function



Anti-theft
password



Smart
Freeze



Voice Guided
Operation



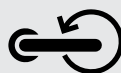
Passage
Mode



Remote Location
Unlocking



Low Battery
Indication Alarm

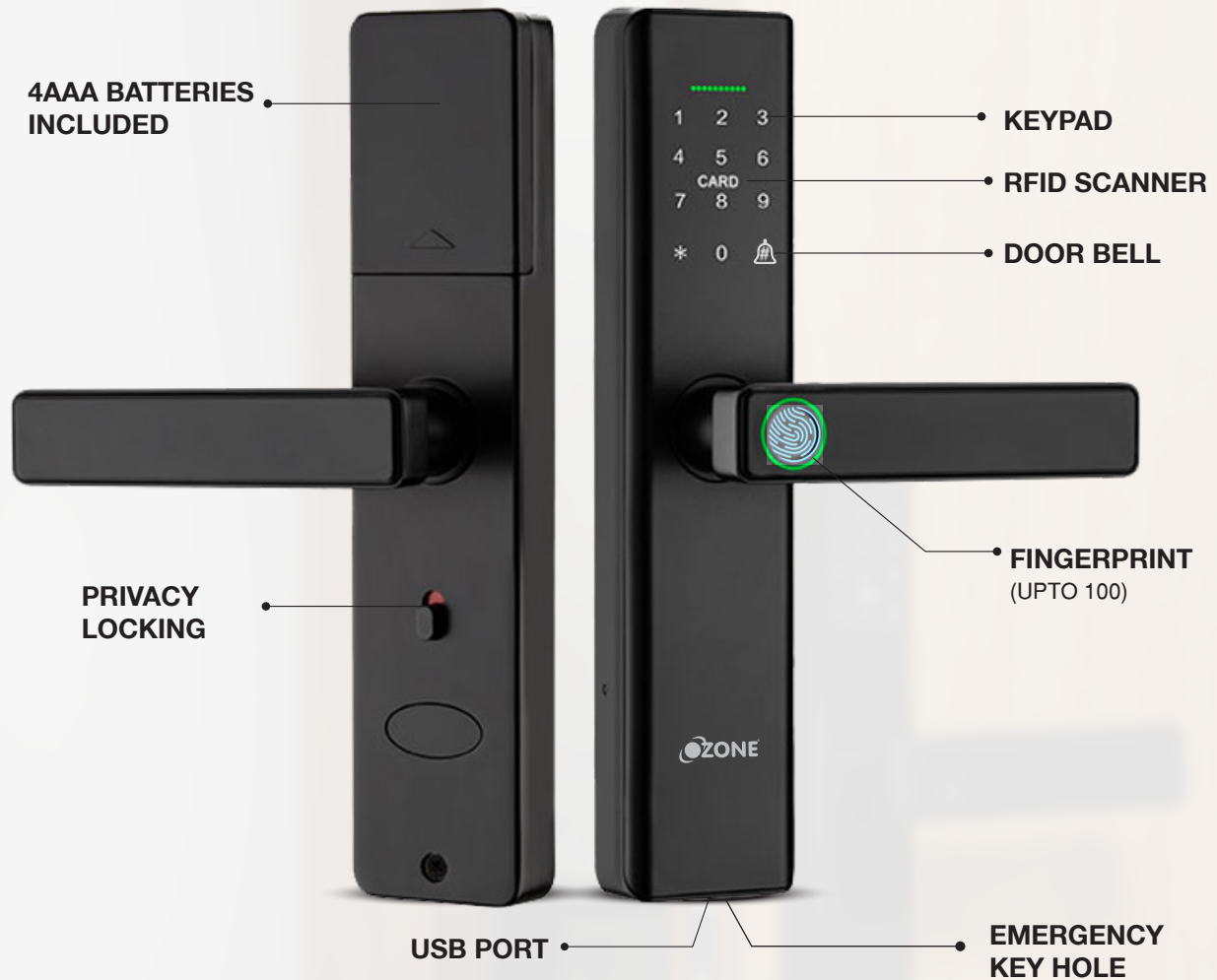


Universal
Handle

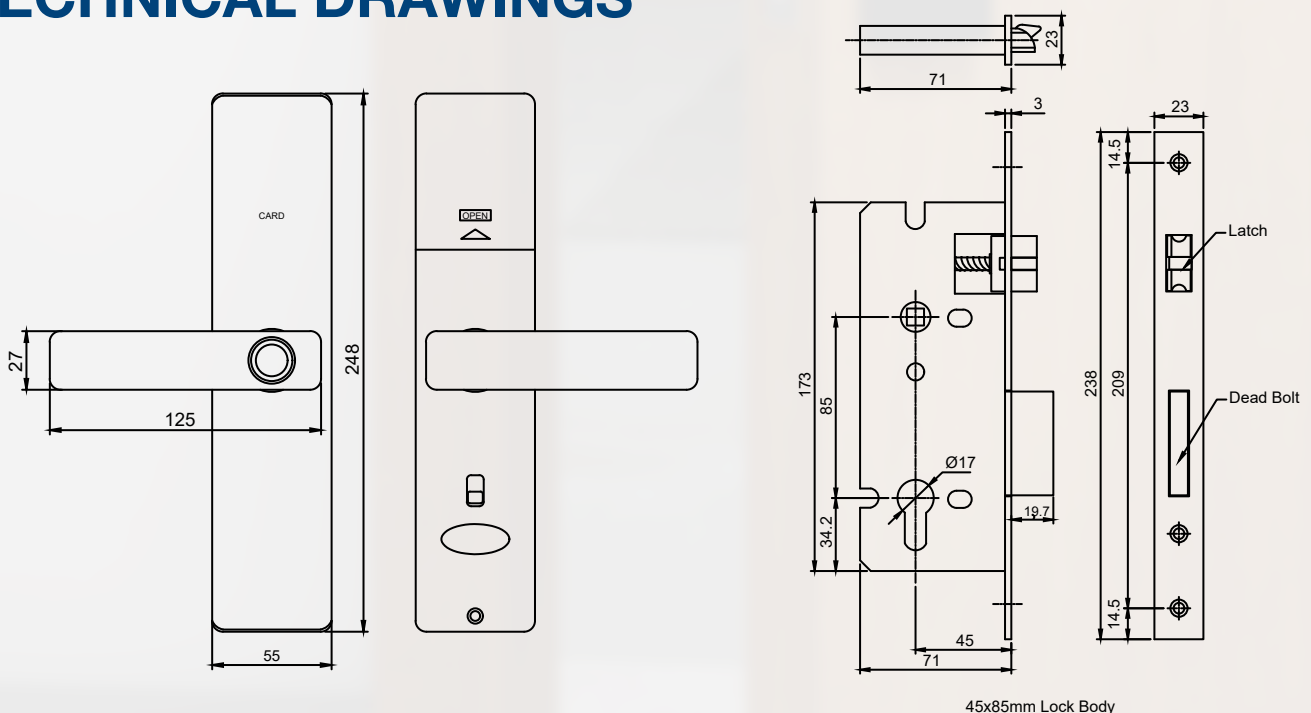


Privacy
Locking

PRODUCT STRUCTURE



TECHNICAL DRAWINGS



PRODUCT SPECIFICATIONS

Dimension
248x56x20mm

Body Dimension
45x85mm

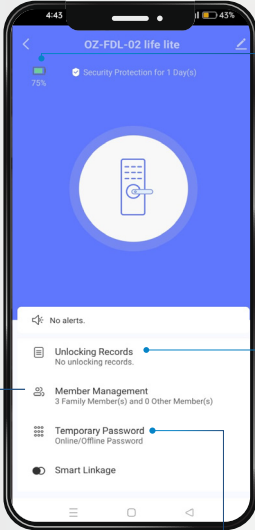
Mortise Material
Stainless Steel Lock Body

Finish
Black/Antique Copper

Door Thickness
30-65mm

Door Type
Wooden/Metal

USER INTERFACE:



1 Power display:
When the phone is connected to the lock, you can see the lock's real time battery life.

2 Member management:
You can add family members, assign fingerprint, password & RFID card for members.

3 Temporary code:
Use this to create temporary passcode to unlock the lock.

4 Audit Trail:
You can check the records and logs all access events, including times and user identities, to enhance security and track usage.

SCAN
QR CODE TO
VISIT WEBSITE



+91 9310012300

FOLLOW US ON    