

OPERATING MANUAL SAFILO BIO-Z SERIES



FEATURES

Safilo Bio-Z, Pro & Max
Color- Black



Fingerprint



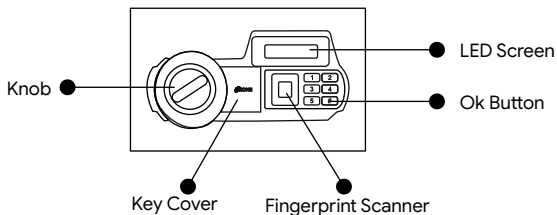
Password



Emergency Key

OPERATING INSTRUCTIONS FOR SAFILO BIO-Z SERIES

Ozone Safilo Bio-Z safe is designed to help you protect your valuables against theft. Please install the safe in a cupboard or on a wall/floor and keep the emergency key in a safe place. Keep the safe in a secret place for paramount security.



Accessories Include:

- 1) 2 Keys
- 2) 4 Mounting Bolts
- 3) 4x1.5 Voltage AA Batteries
- 4) Floor Carpet
- 5) Power Supply Adaptor
- 6) Warranty

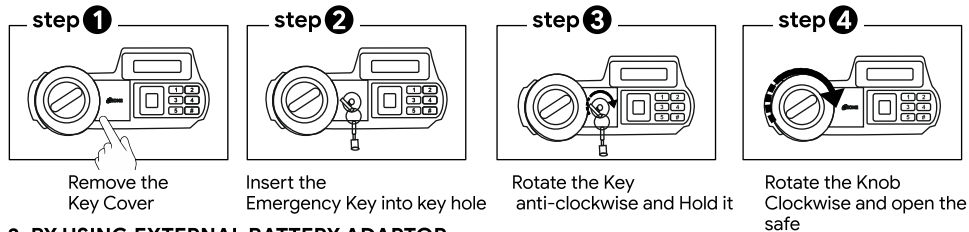
Specifications:

Model	External Size (HxWxD)mm	Weight (Kg.)	Volume (Ltr.)
Safilo Bio- Z	250X350X250	9.5	16
Safilo Bio- Z Pro	250x455x375	12.4	34.94
Safilo Bio- Max	420x350x360	18.1	44.1

NOTE: 1) Kindly change the User and Master Password before operating the Digital Safe
2) Please do not keep the Emergency Keys inside the safe!.

HOW TO OPEN A SAFE FOR THE FIRST TIME

1. OPEN THE SAFE USING THE EMERGENCY KEY



2. BY USING EXTERNAL BATTERY ADAPTOR

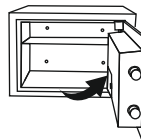


INSTALLING THE BATTERIES

Open the safe door, remove the battery case cover and insert new AA batteries (4x1.5V) according to '+' '-' polarity.

Low Battery Indication - If the display will show "RED" indication, immediately we need to replace the battery.

NOTE: In case of battery drain, please replace all the existing batteries with new ones.



HOW TO CHANGE THE PASSWORD

Default user password is (1234)

The door must be in open position, press reset button once, which is available backside of the door, the yellow light will up twice and buzzer will ring twice. Enter the 4-8 digits password & press "#" to confirm. The yellow indicator is on twice and the buzzer beeps twice. The setting is successful.

HOW TO CHANGE THE MASTER PASSWORD

Default user password is (123456)

The door must be in open position, press "33", then press reset button, the buzzer will beep three times, and the yellow light will be on. Enter the 4-8 digits new master password, press "#" to confirm, and the yellow light will turn on twice, and the buzzer will beep twice, indicating that the setting is successful.

HOW TO SET THE FINGERPRINT

The door must be in open position, press reset button once, which is available on the back of the door, the buzzer ring "didi" twice, yellow light on, input your fingerprint, then "didi" twice, yellow light flashes twice input your finger on the sensor three time, when rings a long "di", yellow light off, it means the first fingerprints registered successfully. (Please repeat the above step if you want to continue to register more fingerprints)

NOTE: You can register upto 30 fingerprints, if the operating fails, the buzzer will "didi" 0 fingerprints.

DUAL MODE SETTING (FINGERPRINT + PASSWORD) / (FINGERPRINT or PASSWORD)

The door must be in open position

Press 1 numerical button & then press reset button “di” sound will be appear. The dual mode setting is now successfully done.

NOTE: This operation can be done for single mode open and double mode open shift.

USE DUAL MODE TO OPEN THE DOOR

Password + Fingerprint: Input the correct password, rings “didi”, the green light flashing three times, then input a correct fingerprint, the buzzer rings “didi” ring twice, the green light on, turn the knob to open the door. if there is no fingerprint input within 10 second, the green light will off, yellow light flashing three time, then alarm sound will appear & it goes into sleep mode.

Fingerprint + Password: Input the correct fingerprint, rings “didi”, the green light flashing three times, then input a correct password, the buzzer rings “didi”, twice, the green light on, turn the knob to open the door. if is no password input within 10 second, the green light off, yellow light flashing three times, buzzer “didi” three times, then alarm sound will appear & it goes into sleep mode.

TO LOCK THE SAFE



Close the door



Rotate the knob anti-clockwise and close the safe

TO OPEN THE SAFE



Enter your 3-8 digits password/fingerprint

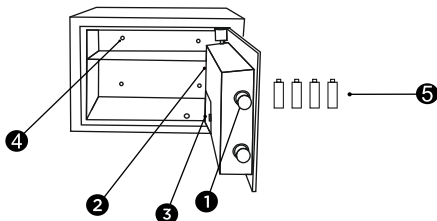


Then press “#”



Rotate the knob clockwise and open the safe

1. Shooting Bolts
2. Reset Button
3. Battery Box
4. Mounting Hole
5. Batteries



AUTO FREEZE MODE

After three consecutive times of wrong password, the system will be locked automatically. During that time, the display will show “HOLD 5”. The system will start again after 5 mins.

Interior LED light:

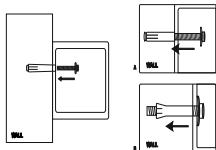
LED interior lighting to give you convenient access to valuables in a less lit/dark environment.

CLEAR FINGERPRINTS AND PASSWORDS

Press the red button for 5 seconds then rings a long “di” sound, all the fingerprints and password will be non-active and the safe will be only operated by defaulted password 1234 or fingerprint.

INSTALLING THE SAFE

- Safe can be easily install in wardrobe or on wall.
- Fix the safe in the place which is not easy to move.
- Drill holes for expansion bolts (or clamping screws) in the right place.
- Turn the expansion bolts counter clockwise to separate.
- Use the expansion bolts (or clamping screws) to secure the case to the wall.
- Make sure the case is mounted in place as required and then tighten all screws.



Do's	Don'ts
1) On receipt of the safe, install it properly	1) Don't leave the safe in open position
2) Keep mechanical override key (Emergency Key) at a Safer place	2) Don't Share your password with anyone
3) Always reset the User & Master password after installation of the safe	3) Don't put any extra force on knob while opening or closing the safe

OZONE DIGITAL SAFE- CHECK LIST

MODEL NO.: _____ **SERIAL NO.:** _____

DATE: _____ **DATE OF DELIVERY:** _____

CONTENTS:-

1. EMERGENCY KEY	<input type="checkbox"/>
2. PANEL KEY	<input type="checkbox"/>
3. DRAWER KEY	<input type="checkbox"/>
4. BATTERIES	<input type="checkbox"/>
5. ADAPTOR	<input type="checkbox"/>
6. RFID CARD	<input type="checkbox"/>
7. FASTNER	<input type="checkbox"/>
8. MANUAL	<input type="checkbox"/>
9. OPERATION CHECK	<input type="checkbox"/>
10. BODY DAMAGE (IF ANY)	<input type="checkbox"/>

INSPECTED BY :- _____

CUSTOMER / DEALER SIGNATURE & SEAL

E-Mail : Info@ozonesecutech.com | Website: www.ozonesecutech.com

Customer Care: 9310012300