

OPERATING MANUAL SAFILO DIGITAL SERIES



FEATURES

Safilo Digital-1,2,11 & X
Color- Black



LED Display



Emergency Key

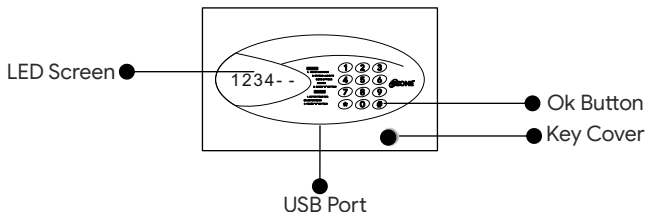


Smart Freeze

Please scan the QR code
for reference video

OPERATING INSTRUCTIONS FOR SAFILO DIGITAL SERIES

Ozone Safilo Digital safe is designed to help you protect your valuables against theft.
Please install the safe in a cupboard or on a wall/floor and keep the emergency key in a safe place.
Keep the safe in a secret place for paramount security.



Accessories Include:

- 1) 2 Keys
- 2) 4 Mounting Bolts
- 3) 4x1.5 Voltage AA Batteries
- 4) Floor Carpet
- 5) Warranty Card

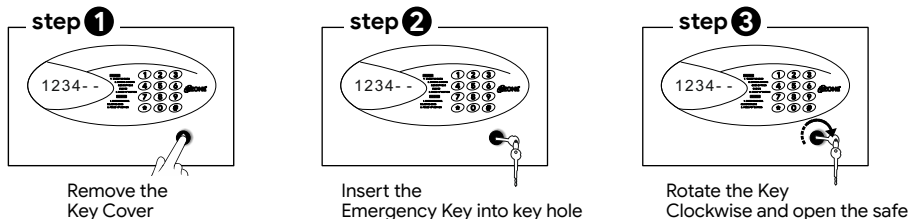
Specifications:

Model	External Size (HxWxD)mm	Weight (Kg.)	Volume (Ltr.)
Safilo Digital- 1	420x350x360	20	40
Safilo Digital- 2	555x350x360	23.8	55
Safilo Digital- 11	250x350x250	9.4	15.9
Safilo Digital- X	250x455x375	12.4	34.94

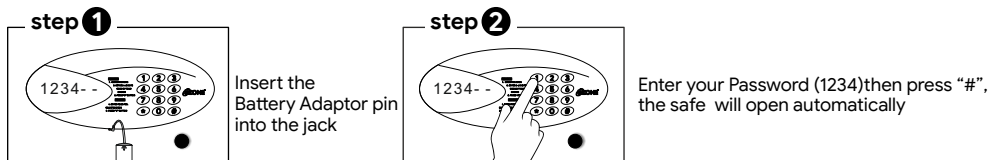
NOTE: 1) Kindly change the User and Master Password before operating the Digital Safe
2) Please do not keep the Emergency Keys inside the safe!.

HOW TO OPEN A SAFE FOR THE FIRST TIME

1. OPEN THE SAFE USING THE EMERGENCY KEY



2. BY USING EXTERNAL BATTERY ADAPTOR

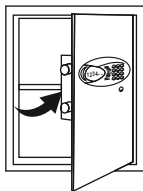


INSTALLING THE BATTERIES

Open the safe door, remove the battery case cover and insert new AA batteries (4x1.5V) according to ‘+’-’ polarity.

Low Battery Indication - If the red indication blinks in that condition we need to change the batteries.

NOTE: In case of battery drain, please replace all the existing batteries with new ones.



HOW TO CHANGE THE USER PASSWORD

Existing user password is (1234).

- The door must be in open position.
- Enter 3-6 digits new user password.
- Close the door and hold it.
- Press “#” button the display will show “CLOSED” indicating, it means the user password has been changed successfully.

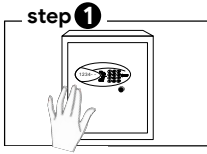
HOW TO CHANGE THE MASTER PASSWORD

Existing master password is (888888).

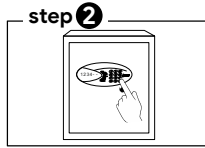
- The door must be in close position.
- Enter existing master password is (888888), then press “#”.
- Display will show pass counting (5-1) in between press “#” Enter new master password then press “#” Display will so again, then re-enter same password and press “#” display will show done it means the master password has been changed successfully.

NOTE: If you open the safe by using master password, Please press “888888”, then “#”.

TO LOCK THE SAFE

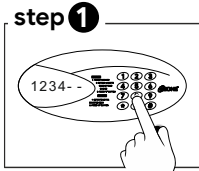


Close the door
and hold it

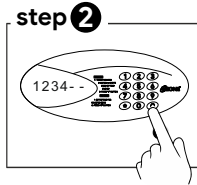


Press “#”button/Enter your
3-6 Digit password then press “#”
the door will be Closed automatically

TO OPEN THE SAFE



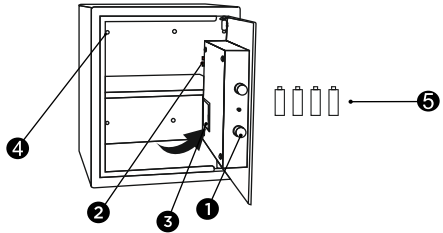
Enter your 3-6 digits
password



Then press “#”,
the door will open automatically

NOTE: If you want to hide the password, please press “*” before entering the password

1. Shooting Bolts
2. Reset Button
3. Battery Box
4. Mounting Hole
5. Batteries



AUTO FREEZE MODE

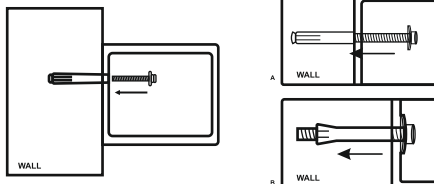
After four consecutive times of wrong password, the system will be locked automatically. During that time, the display will show “HOLD 5”. The system will start again after 5 mins.

Interior LED light:

LED interior lighting to give you convenient access to valuables in a less lit/dark environment.

INSTALLING THE SAFE

- Safe can be easily install in wardrobe or on wall.
- Fix the safe in the place which is not easy to move.
- Drill holes for expansion bolts (or clamping screws) in the right place.
- Turn the expansion bolts counter clockwise to separate.
- Use the expansion bolts (or clamping screws) to secure the case to the wall.
- Make sure the case is mounted in place as required and then tighten all screws.



Do's	Don'ts
1) On receipt of the safe, install it properly	1) Don't leave the safe in open position
2) Keep mechanical override key (Emergency Key) at a Safer place	2) Don't Share your password with anyone
3) Always reset the User & Master password after installation of the safe	3) Do not apply any extra force on the keys on opening and closing the door

OZONE DIGITAL SAFE- CHECK LIST

MODEL NO.: _____ **SERIAL NO.:** _____

DATE: _____ **DATE OF DELIVERY:** _____

CONTENTS:-

- | | |
|--------------------------|--------------------------|
| 1. EMERGENCY KEY | <input type="checkbox"/> |
| 2. PANEL KEY | <input type="checkbox"/> |
| 3. DRAWER KEY | <input type="checkbox"/> |
| 4. BATTERIES | <input type="checkbox"/> |
| 5. ADAPTOR | <input type="checkbox"/> |
| 6. RFID CARD | <input type="checkbox"/> |
| 7. FASTNER | <input type="checkbox"/> |
| 8. MANUAL | <input type="checkbox"/> |
| 9. OPERATION CHECK | <input type="checkbox"/> |
| 10. BODY DAMAGE (IF ANY) | <input type="checkbox"/> |

INSPECTED BY :- _____

CUSTOMER / DEALER SIGNATURE & SEAL

E-Mail : Info@ozonesecutech.com | Website: www.ozonesecutech.com
Customer Care: 9310012300