

OPERATING MANUAL JADE BLACK SERIES



FEATURES

Jade Black, Jade Black-01
& Convenio Digital-33
Color- Black



Password



Emergency Key

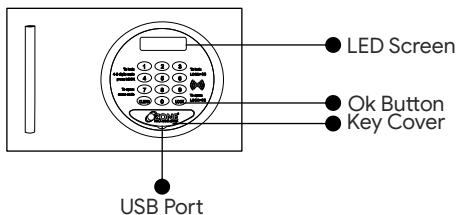


Auto Secure

Please scan the QR code
for reference video

OPERATING INSTRUCTIONS FOR JADE BLACK SAFES

Ozone Jade black safe is designed to help you protect your valuables against theft. Please install the safe in a cupboard or on a wall/floor and keep the emergency key in a safe place. Keep the safe in a secret place for paramount security.



Accessories Include:

- 1) 2 Keys
- 2) 2 Mounting Bolts
- 3) 4x1.5 Voltage AA Batteries
- 4) Floor Carpet
- 5) Warranty Card

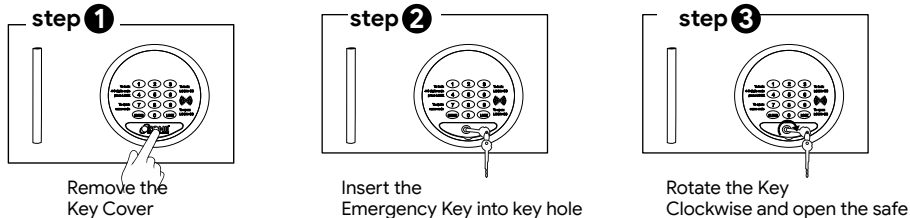
Specifications:

Model	External Size (HxWxD)mm	Weight (Kg.)	Volume (Ltr.)
Jade Black	200x435x365	12.45	26
Jade Black-01	200x350x200	6.4	9.8
Convenio Digital-33	127x400x350	11.2	10

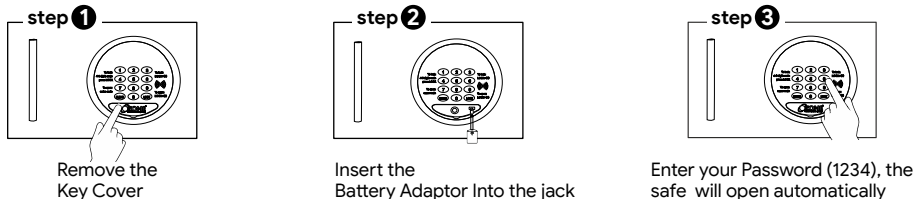
NOTE: 1) Kindly change the User and Master Password before operating the Digital Safe
2) Please do not keep the Emergency Keys inside the safe!.

HOW TO OPEN A SAFE FOR THE FIRST TIME

1. OPEN THE SAFE USING THE EMERGENCY KEY



2. BY USING EXTERNAL BATTERY ADAPTOR

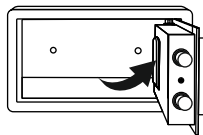


INSTALLING THE BATTERIES

Open the safe door, remove the battery case cover and insert new batteries (4x1.5v AA) according to '+' '-' polarity.

Low Battery Indication - If the display will show "LO BT" in that condition we need to change the batteries.

NOTE: In case of battery drain, please replace all the existing batteries with new ones.



HOW TO CHANGE THE USER PASSWORD

Existing user password is (1234).

- The door must be in open position.
- Enter 3-6 digits new user password.
- Close the door and hold it.
- Press "LOCK" button the display will show "CLOSED" indicating, it means the user password has been changed successfully.

TO CHANGE THE USER RFID CARD UNDER THE CONDITION OF SAFE-OPENING

Place the new RFID card in the sensor area of the safe panel and the display of the safe will show "CLOSED", it means the safe is closed.

HOW TO CHANGE THE MASTER PASSWORD

Existing user password is (000000)

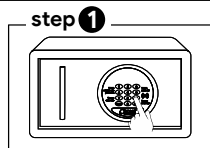
- The door must be in open position.
- Press "CLEAR" twice and the display will show "PROG",
- Enter "842624" + "LOCK", and the display will show "OLD".
- Enter the old master password (000000) then "LOCK" the display will show "NEW"
- Enter a new six-digit new master password then press "LOCK" display will show "GOOD", which means the master password has been changed successfully..

HOW TO CHANGE THE MASTER RFID CARD

- a) The door must be in open position.
- b) Press "CLEAR" twice and the display will show "PROG",
- c) Enter "726248" + "LOCK", and the display will show "CARD".
- d) Put the new "RFID" card sensor area on the panel and display will so good
- e) The new master card has been changed successfully.

NOTE: The company does not set the original master card.

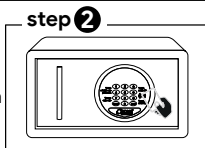
LOCK THE SAFE PASSWORD/RFID CARD



step 1

PASSWORD:

Close the door and hold it. Enter your 3-6 Digit password then Press "LOCK" and the door will be Closed

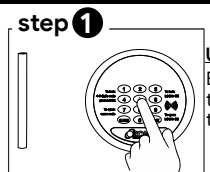


step 2

RFID:

Place the new RFID card in the sensor area of the safe panel and the display of the safe will show "CLOSED", it means the safe is closed.

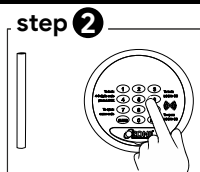
TO OPEN THE SAFE USER & MASTER PASSWORD



step 1

USER:

Enter your 3-6 digits the password then press "LOCK", the door will open automatically



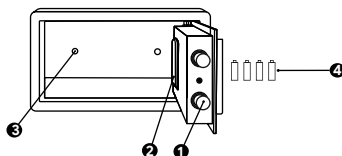
step 2

MASTER:

Press "LOCK" twice display will show "SUPER" enter your master password. The safe will open automatically

NOTE: Audit-trail option available for hotels.

1. Shooting Bolts
2. Battery Box
3. Mounting Hole
4. Batteries



AUTO FREEZE MODE

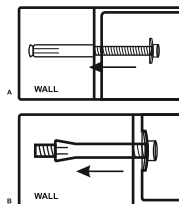
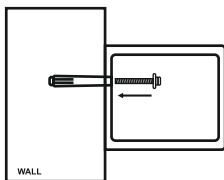
After four consecutive wrong passwords, the system will be locked automatically. During that time, the display will show "HOLD 5". The system will start again after 5mins.

Interior LED light:

LED interior lighting gives you convenient access to valuables in a less lit/dark environment.

INSTALLING THE SAFE

- Safe can be easily installed in the wardrobe or on the wall.
- Fix the safe in a place which is not easy to move.
- Drill holes for expansion bolts (or clamping screws) in the right place.
- Turn the expansion bolts counterclockwise to separate.
- Use the expansion bolts (or fastening screws) to secure the case to the wall.
- Make sure the case is mounted in place as required and then tighten all screws.



Do's	Don'ts
1) On receipt of the safe, install it properly	1) Don't leave the safe in open position
2) Keep mechanical override key (Emergency Key) at a Safer place	2) Don't Share your password with anyone
3) Always reset the User & Master password after installation of the safe	3) Do not apply any extra force on the keys on opening and closing the door

OZONE DIGITAL SAFE- CHECK LIST

MODEL NO.: _____ **SERIAL NO.:** _____

DATE: _____ **DATE OF DELIVERY:** _____

CONTENTS:-

- | | |
|--------------------------|--------------------------|
| 1. EMERGENCY KEY | <input type="checkbox"/> |
| 2. PANEL KEY | <input type="checkbox"/> |
| 3. DRAWER KEY | <input type="checkbox"/> |
| 4. BATTERIES | <input type="checkbox"/> |
| 5. ADAPTOR | <input type="checkbox"/> |
| 6. RFID CARD | <input type="checkbox"/> |
| 7. FASTNER | <input type="checkbox"/> |
| 8. MANUAL | <input type="checkbox"/> |
| 9. OPERATION CHECK | <input type="checkbox"/> |
| 10. BODY DAMAGE (IF ANY) | <input type="checkbox"/> |

INSPECTED BY :- _____

CUSTOMER / DEALER SIGNATURE & SEAL

E-Mail : Info@ozonesecutech.com | Website: www.ozonesecutech.com
Customer Care: 9310012300